

Features

- Flexible LED light source
- Side View Horizontal bend
- High Performance SMD emitters
- 12x25mm side view
- Easy to cut at intervals
- Wide 180° angle of emission
- IP67
- 3 Year Warranty



Applications

POS Display equipment, signage, accent & decorative lighting

Maximum Electrical Characteristics Ta=25°C

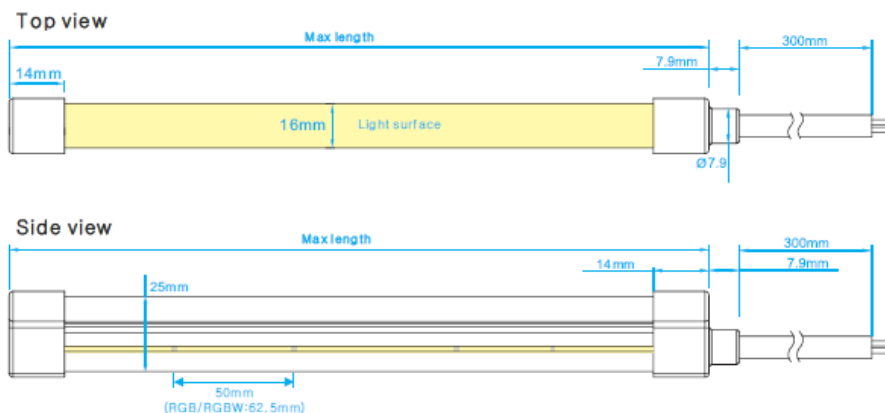
Parameter	24VDC	Unit
Input Voltage	24v Typical	VDC
CRI / Ra	>90	mA/m
Power consumption / metre (max)	5W / 10W / 15W	W/m
Operating Temp	-25 to +45°C	°C
Cut Points	62.5mm	mm

Optical Characteristics Ta=25°C

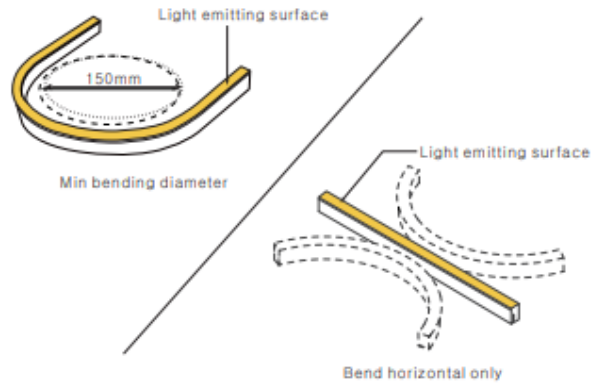
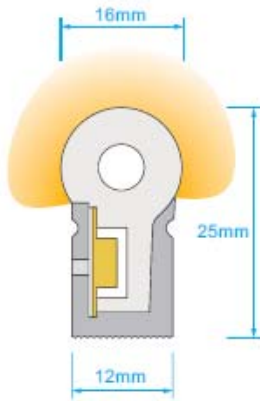
Part Number	Emitted colour	Wavelength nm /CCT typ.	Lumens/metre Power 5W/m (max length 5m)	Lumens/metre Power 10W/m (max length 5m)	Lumens/metre Power 15W/m (max length 5m)
PNS-S12205-RGB-24	RGB	625 / 525 / 465nm	70	131	161
PNS-S1225-RGBW-24-W-30	RGBW	3000K - 5000K	91	180	254

Suffix xx CCT example 30 = 3000K W = Power rating Watts

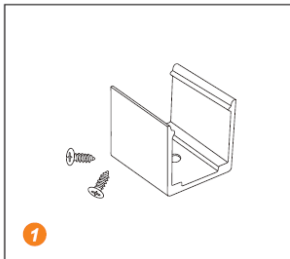
Dimensions



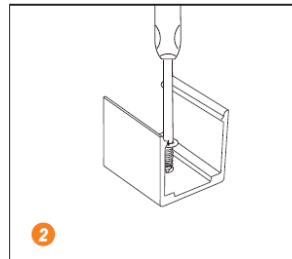
Profile and bending



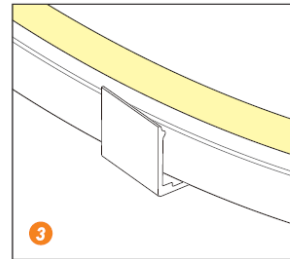
Fixing



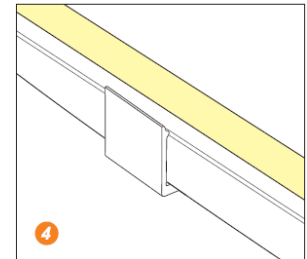
1 Prepare the screws and mounting clips



2 Adjust the fixed clips to the appropriate place, use a screwdriver to fix the screw.



3 Put the light emitting surface upwards, then insert the LED strip into the fixed clips.



4 Fix NEON strip completely into the fixed clip.

Handling notes:

Ensure that the correct low voltage dc power supply is matched to the flexible strip specification

Avoid repeated bending of the strip as this will damage the circuit and components

Avoid excess pressure on the strip as this may result in damage and latent failures.

When cutting, the ingress protection will be compromised please ensure that the assembly is re-sealed accordingly in order to maintain the IP rating

Installation notes:

To achieve a consistent luminous effect, each 5 metre length should be connected to the power source.

To ensure long life we recommend that the strip is kept as cool as possible and environments where the temperature exceeds 40°C should be avoided

Drive & Control:

For control solutions please refer to our range of controllers and drive options which include DMX, RF Wireless, WiFi. More information may be found at <http://www.plusopto.co.uk/led-controllers.html>

Specifications may be subject to change without notice