

Neon Flex Top View Vertical bend

Features

- Flexible LED light source
- Top View Vertical bend
- High Performance SMD emitters
- 12x12mm Top view
- Easy to cut at 50mm intervals
- Wide 180° angle of emission
- IP67
- 3 Year Warranty



Applications

POS Display equipment, signage, accent & decorative lighting

Maximum Electrical Characteristics Ta=25°C

Parameter	24VDC	Unit
Input Voltage	24v Typical	VDC
CRI / Ra	>90	mA/m
Power consumption / metre (max)	5W and 10W	W/m
Operating Temp	-25 to +45°C	°C

Optical Characteristics Ta=25°C

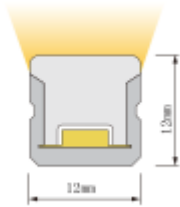
Part Number	Emitted colour	Wavelength/CCT typ.	Lumens/metre Power 5W/m (max length 5m)	Lumens/metre Power 10W/m (max length 5m)
PNT-1212H-W27-24V-x	Warm White	2600K – 2800K	420	820
PNT-1212H-W30-24V-x	Warm White	2900K - 3100K	450	880
PNT-1212H-W35-24V-x	Natural/Warm White	3400K – 3700K	480	950
PNT-1212H-W40-24V-x	Natural White	3800K – 4300K	475	930
PNT-1212H-W50-24V-x	Daylight White	4800K – 5300K	475	940
PNT-1212H-W60-24V-x	Pure White	5900K – 6400K	480	950

Notes:

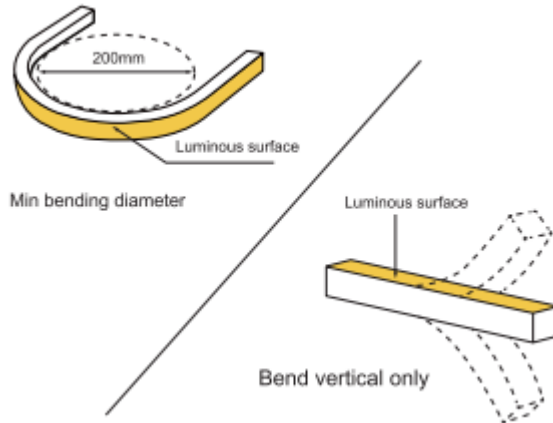
X denotes suffix -5W for low power -10W for high power

Primary colours R, G, B, Y and Pink also available

Dimensions



Top view, Vertical bend



Cable entry options

Injection plug

Front Cable Entry:
The cable could be hidden in all directions by the flexible design.



Solderless end cap

Side Cable Entry:
The cable could be perfectly hidden to achieve seamless light connection.



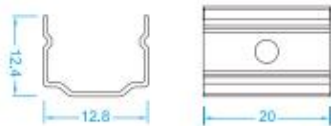
Silicone end cap

Bottom Cable Entry:
The cable could be perfectly hidden to achieve seamless light connection.

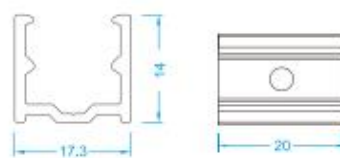
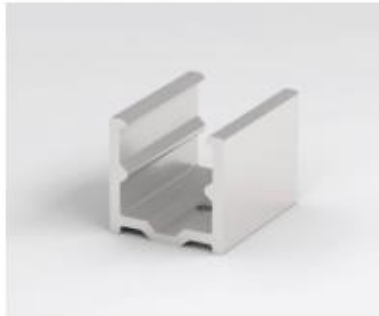


Mounting Accessories

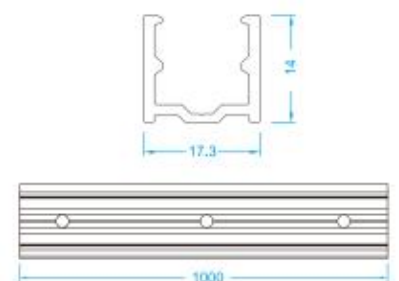
Stainless Steel Mounting clips



Aluminium Mounting clips



Aluminium Profile



Handling notes:

Ensure that the correct low voltage dc power supply is matched to the flexible strip specification

Avoid repeated bending of the strip as this will damage the circuit and components

Avoid excess pressure on the strip as this may result in damage and latent failures.

When cutting, the ingress protection will be compromised please ensure that the assembly is re-sealed accordingly in order to maintain the IP rating

Installation notes:

To achieve a consistent luminous effect, each 5 metre length should be connected to the power source.

To ensure long life we recommend that the strip is kept as cool as possible and environments where the temperature exceeds 40°C should be avoided

Drive & Control:

For control solutions please refer to our range of controllers and drive options which include DMX, RF Wireless, WiFi. More information may be found at <http://www.plusopto.co.uk/led-controllers.html>

Specifications may be subject to change without notice